



Anthea Contemporary Art Investment Opportunities CLP

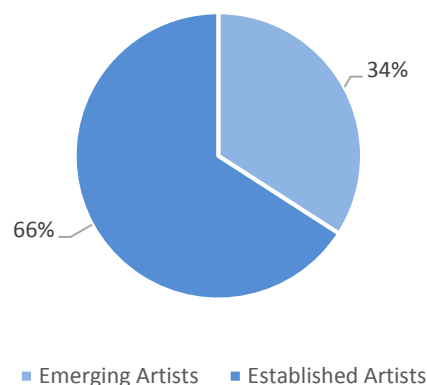
September 2015 Snapshot

Anthea Contemporary Art Investment Opportunities CLP (Anthea - CAIO) is the successor of Anthea CAIF. It focus on achieving long-term capital appreciation through investments in Post War and Contemporary art works from major established post-war artists, up and coming artists from the international Contemporary Art scene and a selection of young talented emerging artists.

Fund Features

Fund Type:	Common Limited Partnership
Domiciliation:	Luxembourg
General Partner :	Anthea CAI S. á r.l.
Investment Advisor:	Anthea Art Investments AG
Management Fee:	2.5% p.a.
Performance Fee:	20%
Currency:	EURO
Inception:	April 2013

Portfolio Breakdown by Investment Category

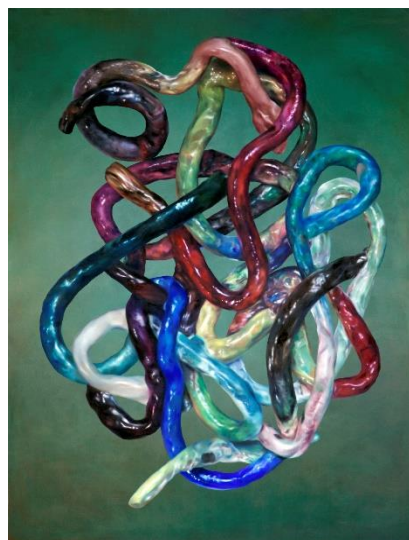


Portfolio Performance Statistics

Return YTD:	7.5%
ROI since inception*:	27.1%
Total number of art works:	36
Total number of artists:	13
Best investment performance:	441.7%
Worst investment performance:	-9.7%
Highest exposure to single work:	19.5%
Highest exposure to single artist:	19.5%

For further information

Anthea Art Investments AG
 Bundesplatz 16
 CH-6304, Zug
 Switzerland
 Tel.: +41 41 720 0990
 Email: info@anthea-art.com



The New God, 2013
 Francisco Sierra
 220 x 170 cm, Oil on canvas

Disclaimer

This summary document may not be reproduced or distributed except by authorized representatives of Anthea Contemporary Art Investment Opportunities CLP (the "Partnership"). This document does not constitute or form part of any offer or invitation to subscribe for or to commit to subscribe for shares of the Partnership. Recipients of this document who intend to subscribe for or to commit to subscribe for shares of the Partnership are reminded that any application may only be made on the basis of the information and provisions contained in the Partnership Issuing Document. No reliance may be placed for any purpose whatsoever on the information contained in this document or on its completeness. This document does not contain a complete description of the risks associated with an investment in the Partnership. Past performance is not a guarantee of future results.

* Return on Investment (ROI) upon portfolio valuation provided by leading auction house.